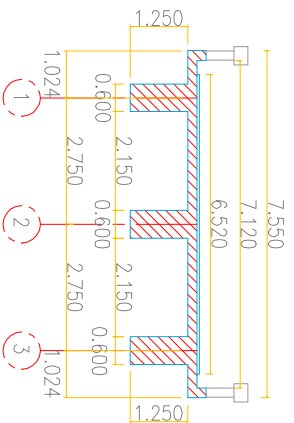
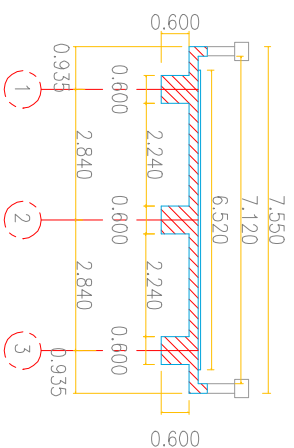


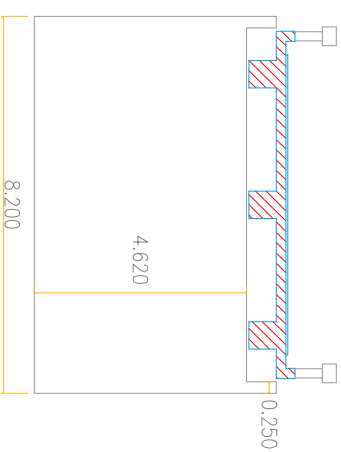
SECCION TRANSVERSAL
CORTE (A-A')
ESCALA 1_100



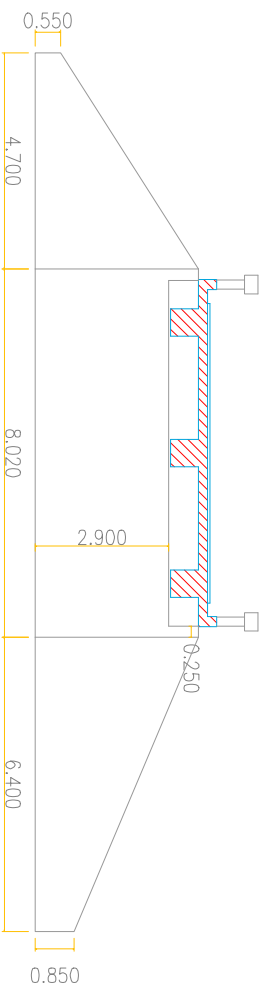
SECCION TRANSVERSAL
CORTE (C-C')
ESCALA 1_100



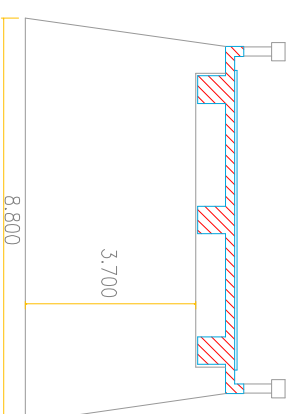
CORTE (C-C') ES1
ESCALA 1_100



CORTE (A-A') ES2
ESCALA 1_100



CORTE (B-B') PILA
ESCALA 1_100



NOTA
TODAS LAS MEDIDAS ESTAN DADAS EN METROS