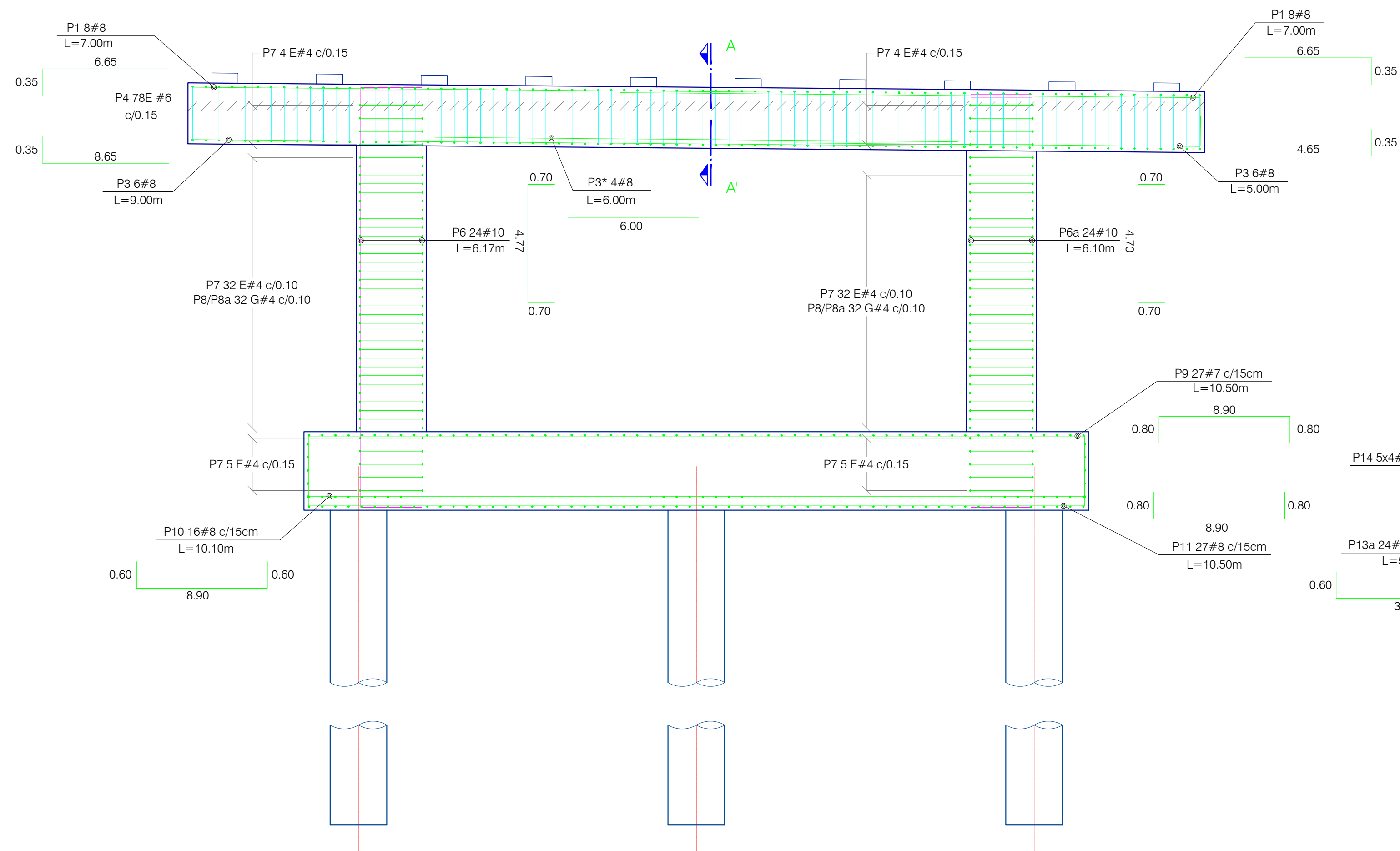
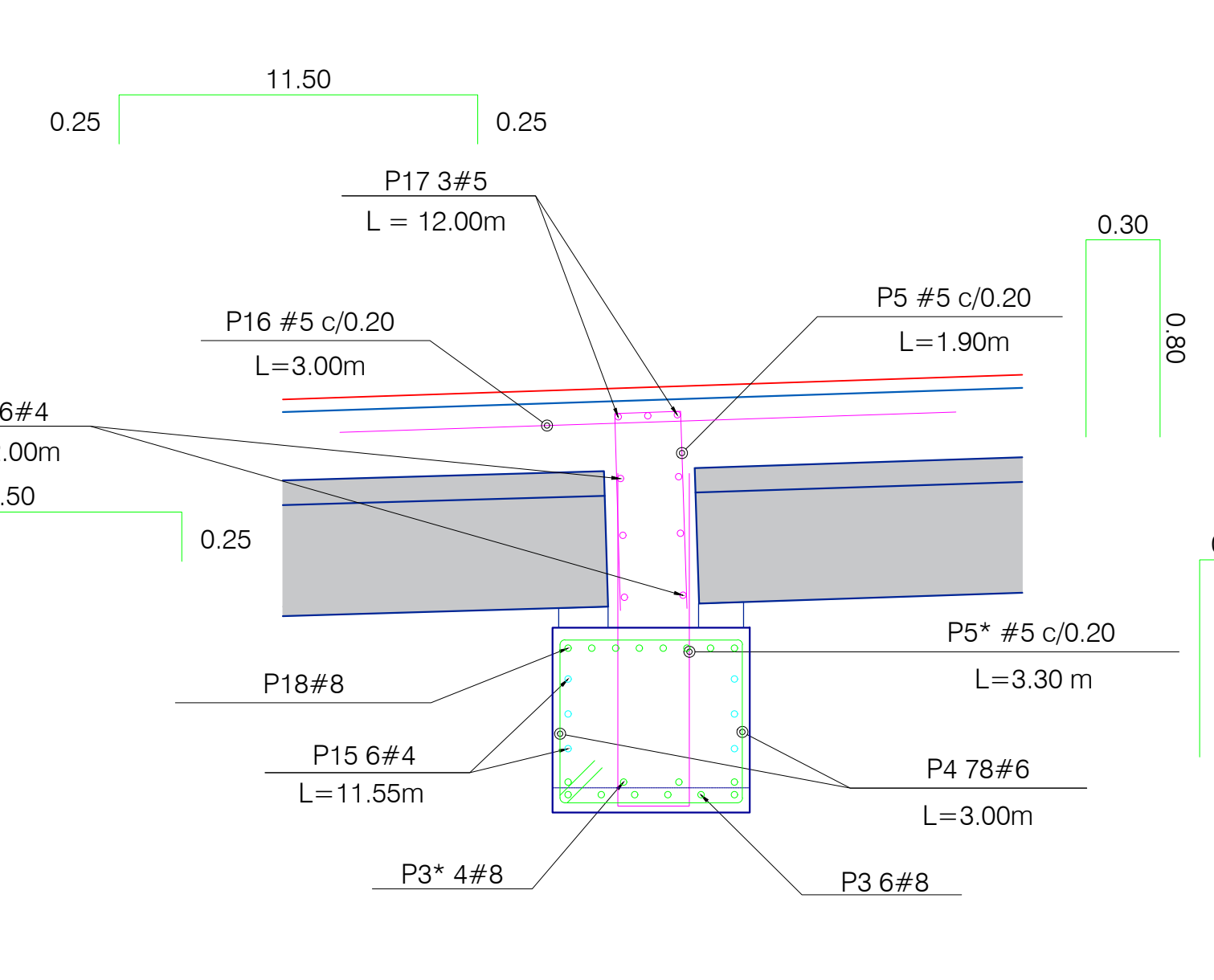


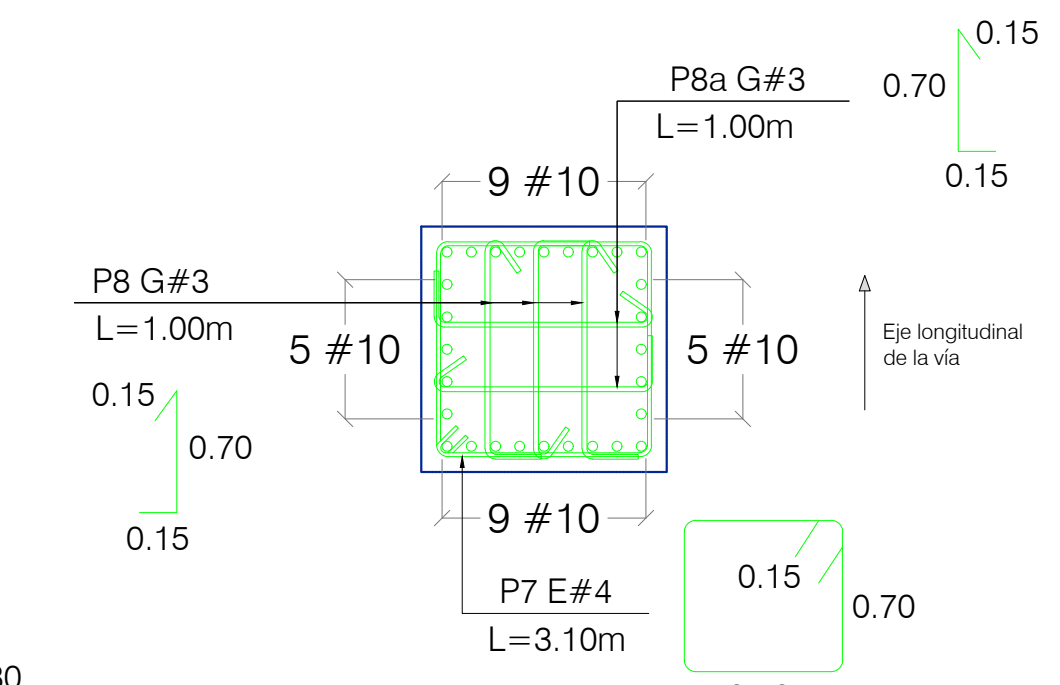
REFUERZO INFERIOR
PLANTA ENCEPADO
ESC. 1:40



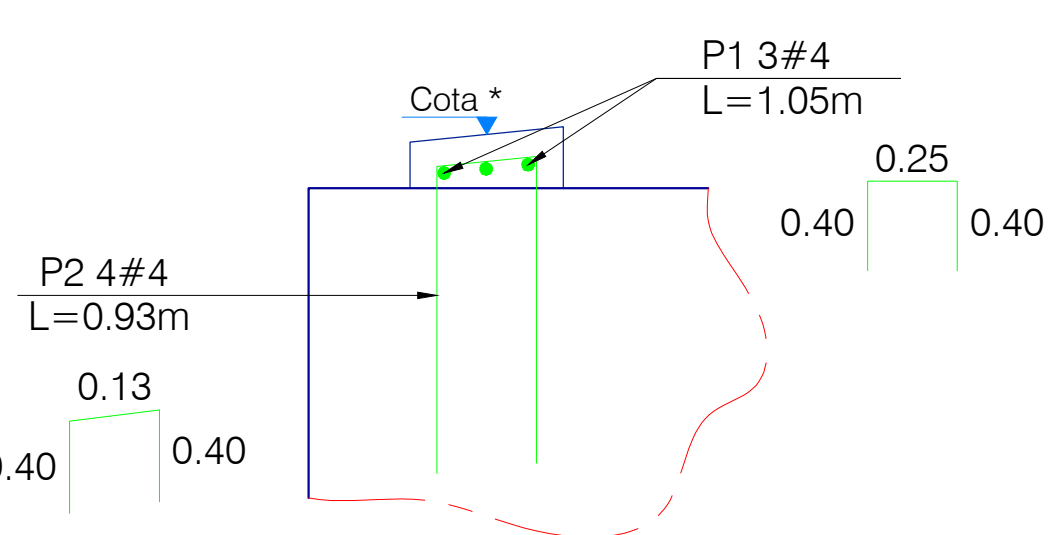
PORTICO 11
REFUERZO: VISTA FRONTAL
ESC. 1:40



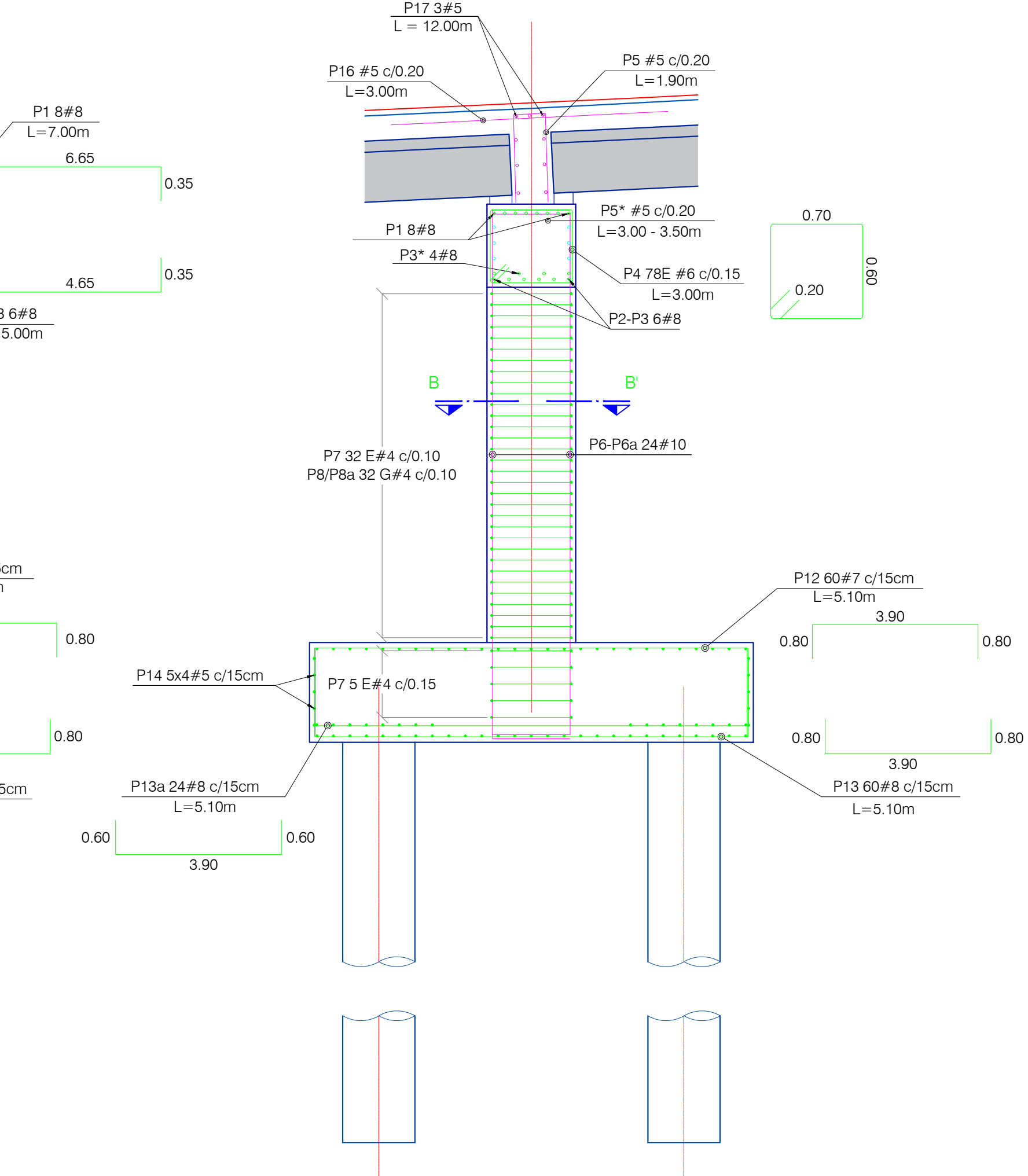
SECCIÓN DINTEL
CORTE A-A'
ESC. 1:25



SECCIÓN FUSTE
CORTE B-B'
ESC. 1:25



DETALLE TÍPICO
REFUERZO CAPITEL
ESC. 1:10



PORTICO 11
REFUERZO: VISTA LATERAL
ESC. 1:40

CUADRO DE DESPIECES PÓRTICO 11							
POSICIÓN	FORMA	BARRA NÚMERO	DIÁM.	CANTIDAD	LONG (m)	PESO (kg/m)	PESO TOTAL (kg)
P1	6.65	8	1"	16	7.00	3.97	445
P2	8.65	8	1"	8	9.00	3.97	286
P3	4.65	8	1"	8	5.00	3.97	159
P3*	6.00	8	1"	4	6.00	3.97	95
P4	0.60	6	3/4"	78	3.00	2.24	524
P5	0.30	5	5/8"	58	1.90	1.55	171
P5*	0.30	5	5/8"	58	3.30	1.55	297
P6	0.70	10	1.27"	24	6.15	6.41	946
P6a	0.70	10	1.27"	24	6.05	6.41	931
P7	0.70	4	1/2"	82	3.10	1.00	254
P8	0.70	4	1/2"	128	1.00	1.00	128
P8a	0.7	4	1/2"	128	1.00	1.00	128
P9	0.80	7	7/8"	27	10.50	3.04	862
P10	0.60	8	1"	16	10.10	3.97	642
P11	0.80	8	1"	27	10.50	3.97	1,125
P12	0.70	7	7/8"	60	5.30	3.04	967
P13	0.70	8	1"	60	5.30	3.97	1,262
P13a	0.60	8	1"	24	5.10	3.97	486
P14	2.50	5	5/8"	20	7.50	1.55	233
P15	11.55	4	1/2"	6	11.55	1.00	69
P16	3.00	5	5/8"	58	3.00	1.55	270
P17	11.50	5	5/8"	3	12.00	1.55	56
P17*	11.50	4	1/2"	6	12.00	1.00	72
PESO TOTAL ACERO 420 MPa (kg):							10,407
TOTAL CONCRETO CALSE A 28 MPa (m³):							43.10