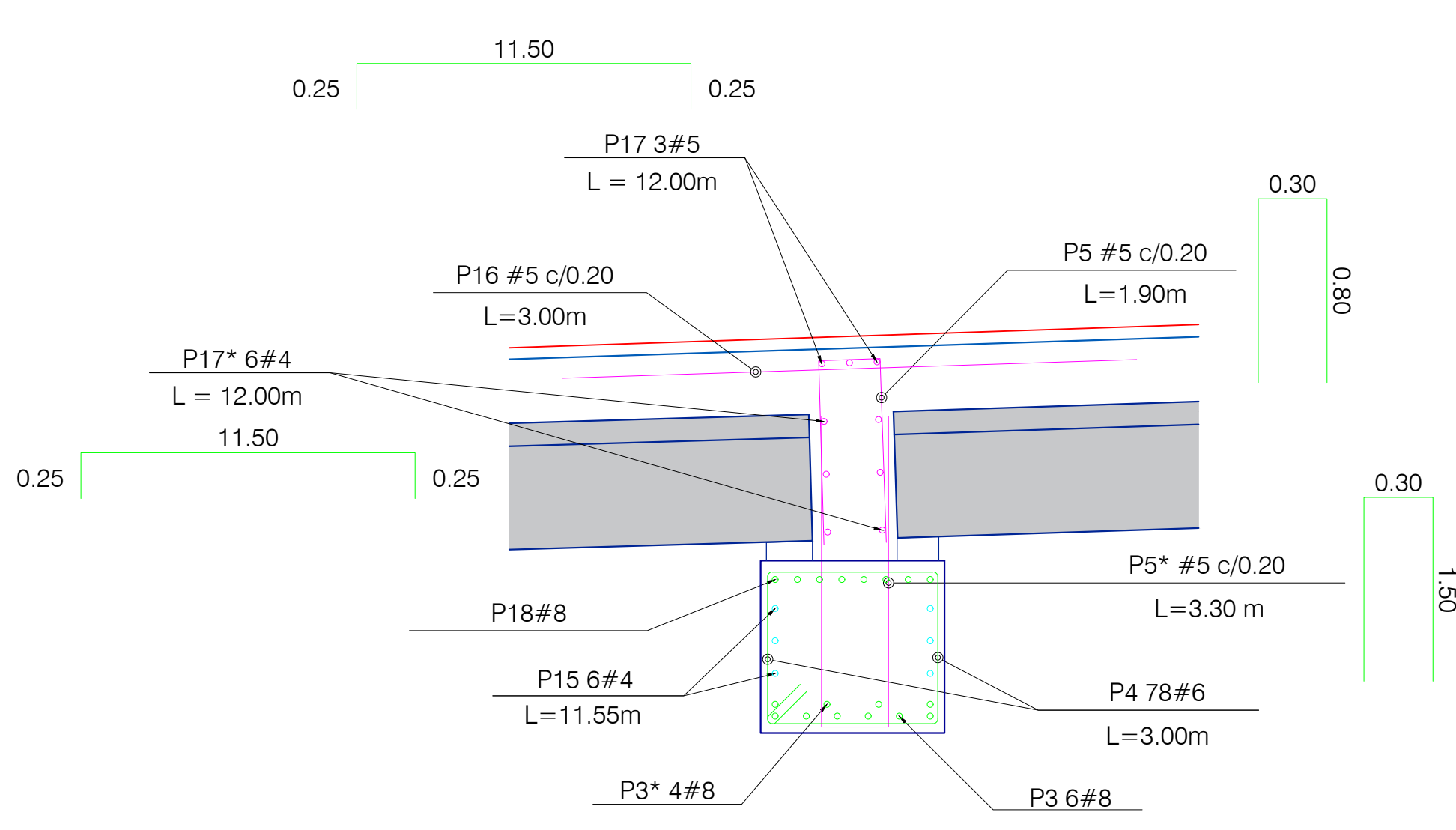
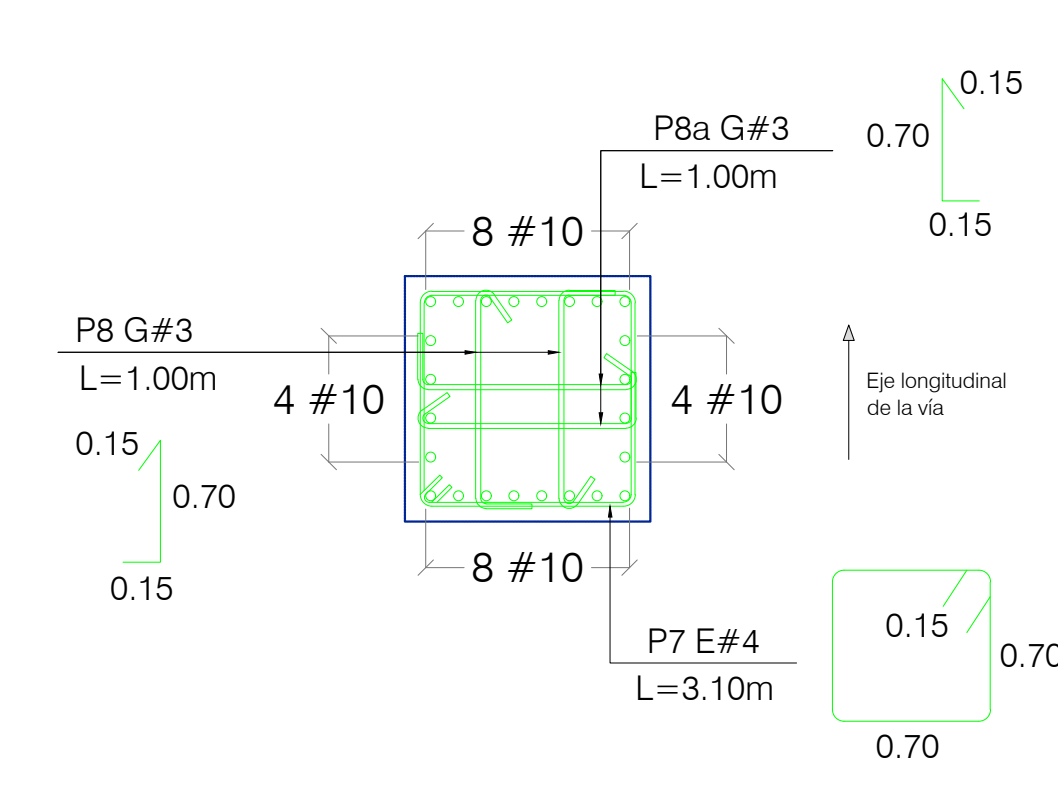


REFUERZO INFERIOR
PLANTA ENCAPADO
ESC. 1:40

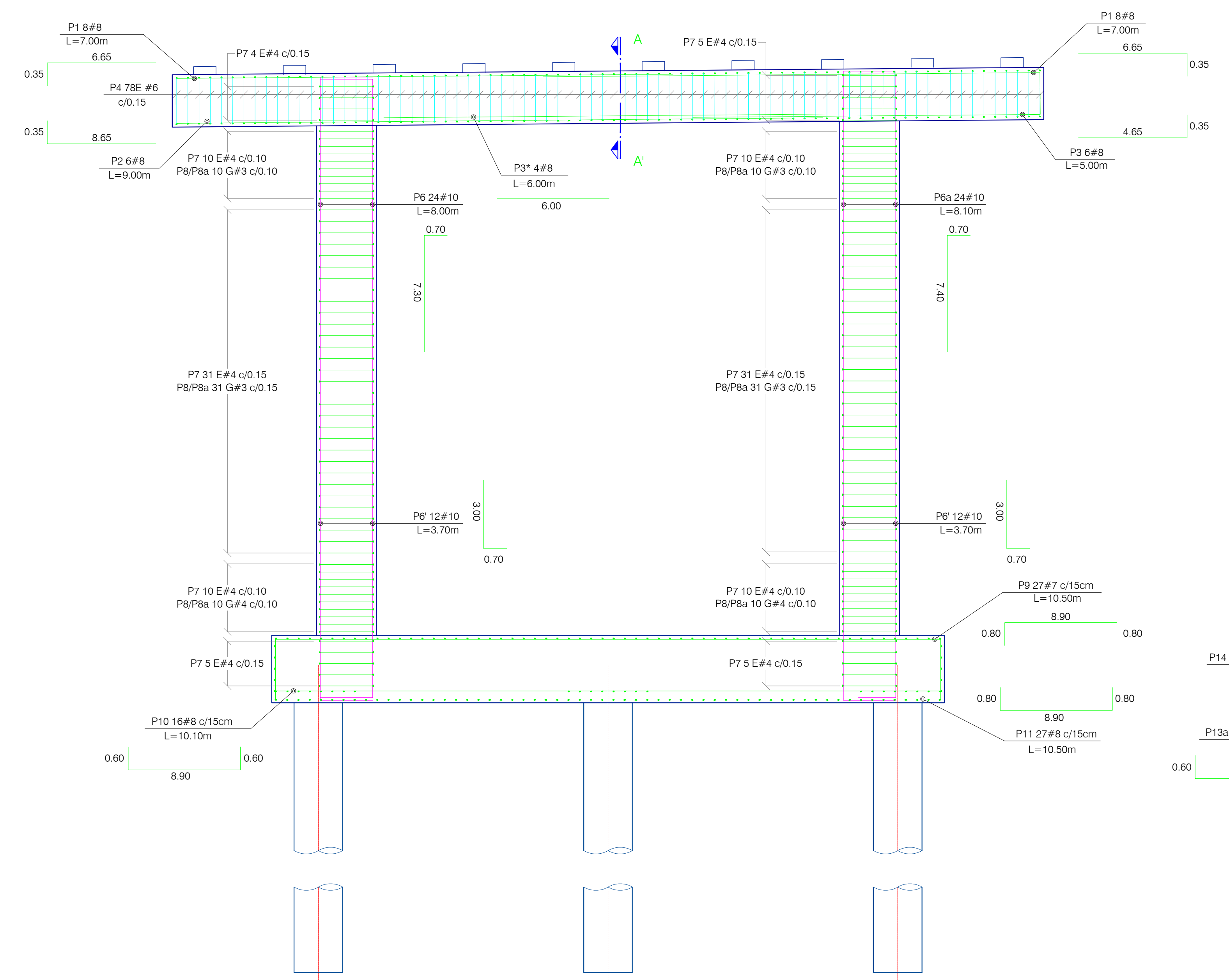


SECCIÓN DINTEL
CORTE A-A'
ESC. 1:25

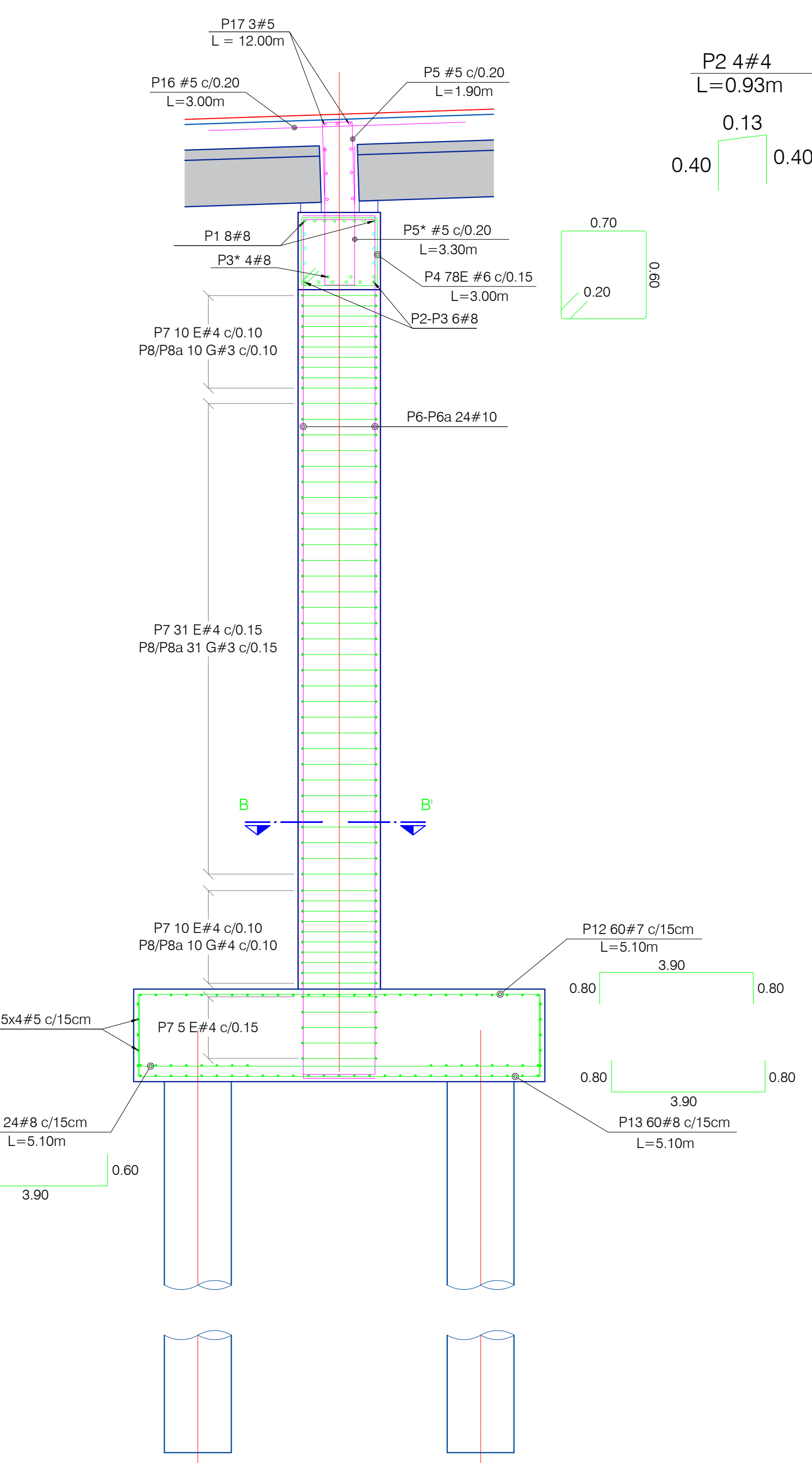


SECCIÓN FUSTE
CORTE B-B'
ESC. 1:25

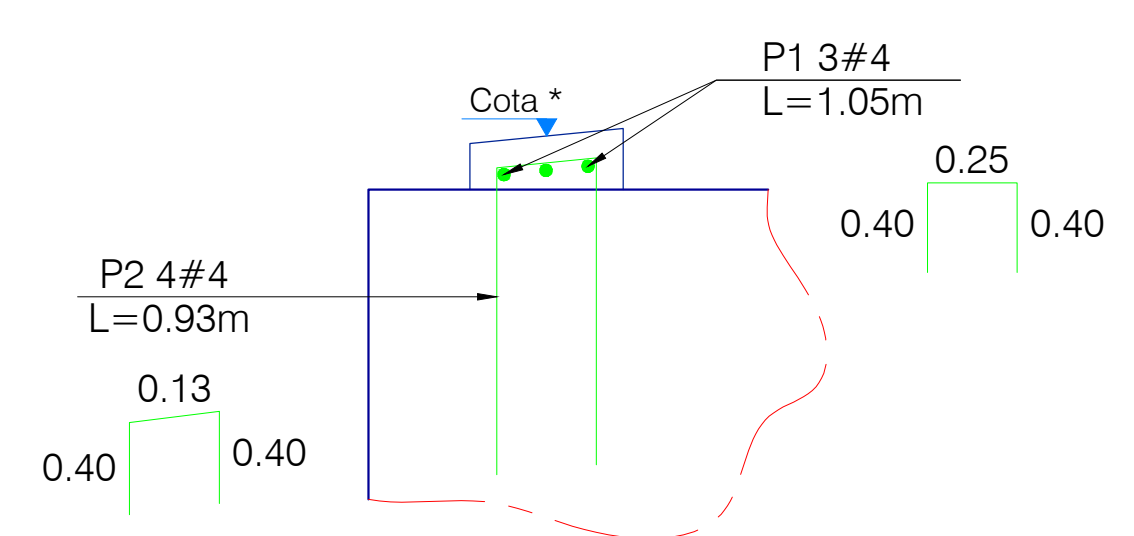
NOTA: LOS GANCHOS DEBEN SER ALTERNADOS EN ALTURA.



PORTICO 2
REFUERZO: VISTA FRONTAL
ESC. 1:40



PORTICO 2
REFUERZO: VISTA LATERAL
ESC. 1:40



DETALLE TÍPICO
REFUERZO CAPITEL
ESC. 1:10

CUADRO DE DESPIECES PÓRTICO 2						
POSICIÓN	FORMA	BARRA NÚMERO	DIÁM.	CANTIDAD	LONG (m)	PESO TOTAL (kg)
P1	6.65	8	1"	16	7.00	3.97 445
P2	6.65	8	1"	8	9.00	3.97 286
P3	4.65	8	1"	8	5.00	3.97 159
P3*	6.00	8	1"	4	6.00	3.97 95
P4	0.60	6	3/4"	78	3.00	2.24 524
P5	0.80	5	5/8"	58	1.90	1.55 171
P5*	1.50	5	5/8"	58	3.30	1.55 297
P6	7.30	10	1.27"	24	8.00	6.41 1,231
P6a	7.40	10	1.27"	24	8.10	6.41 1,246
P6*	3.00	10	1.27"	48	3.70	6.41 1,138
P7	0.70	4	1/2"	121	3.10	1.00 375
P8	0.70	3	3/8"	164	1.00	0.56 92
P8a	0.70	3	3/8"	164	1.00	0.56 92
P8*	0.70	4	1/2"	40	1.00	1.00 40
P8a*	0.70	4	1/2"	40	1.00	1.00 40
P9	8.90	7	7/8"	27	10.50	3.04 862
P10	8.90	8	1"	16	10.10	3.97 642
P11	8.90	8	1"	27	10.50	3.97 1,125
P12	3.90	7	7/8"	60	5.30	3.04 967
P13	3.90	8	1"	60	5.30	3.97 1,262
P13a	3.90	8	1"	24	5.10	3.97 486
P14	5.00	5	5/8"	20	7.50	1.55 233
P15	11.50	4	1/2"	6	11.55	1.00 69
P16	3.00	5	5/8"	58	3.00	1.55 270
P17	11.50	5	5/8"	3	12.00	1.55 56
P17*	11.50	4	1/2"	6	12.00	1.00 72
PESO TOTAL ACERO 420 MPa (kg):						12,274
TOTAL CONCRETO CALSE A 28 MPa (m³):						47.70